



Tahoe
LUXURY PONTOON BOATS

2021 CATALOG | THE ART OF THE PONTOON



MORE THAN JUST A GREAT BOAT

- 2020 NMMA Innovation Award winner!
- 2019 Michigan Manufacturer of the Year!
- The only pontoon manufacturer to take multiple endurance trips across some of the most challenging waterways in the world!
- The FIRST ever pontoon boat to pace an offshore powerboat race. 2785 Excalibur ELW powered by Twin Mercury 450's - Official Pace Boat of Roar Offshore Powerboat Races, October 2019!
- The first winner of the NMMA Innovation award for an aluminum pontoon boat!
- A perennial winner of the NMMA CSI Award!
- One of the few privately owned pontoon boat manufacturers that knows and respects our customers and dealers!
- One of the largest vertically integrated boat manufacturing facilities in the world!

excellence
AWARDS



OFFICIAL PACE BOAT

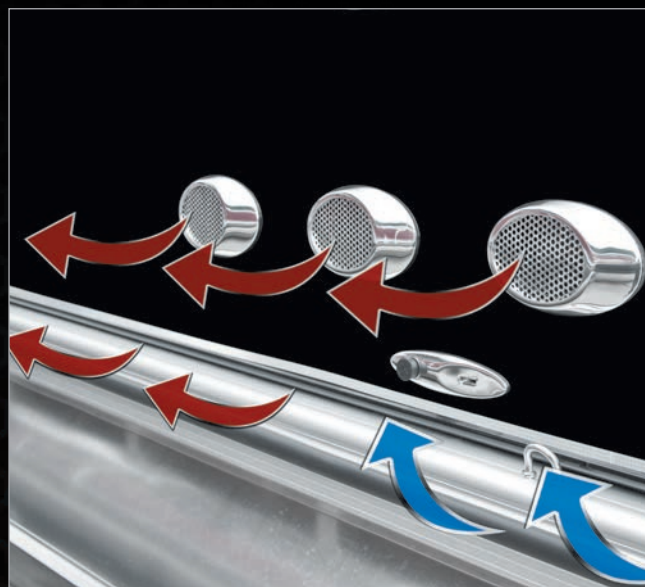


THE ART OF THE PONTOON | WWW.TAHOEPONTOONS.COM

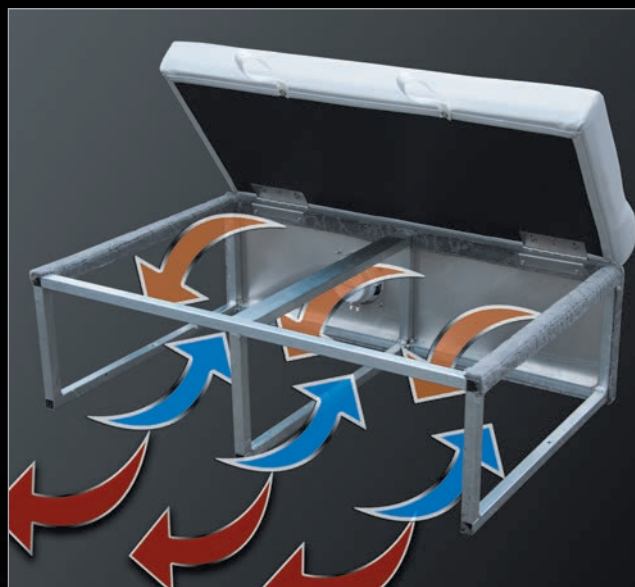


CONSTRUCTION |

Exclusive High-Quality Features



You won't have to deal with mildew or fungus with Tahoe's exclusive Flo Thru Ventilation™ Seating. Unlike plastic seating, our exclusive aluminum seat frames have external and internal air flow that dries out the seat compartments while moving and even when the boat is stored!



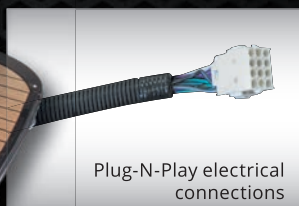
Our exclusive aluminum seat frames have 30 percent more storage than conventional plastic seat frames. Try putting all this in plastic seat storage!



Easy to clean, beautiful external wall.



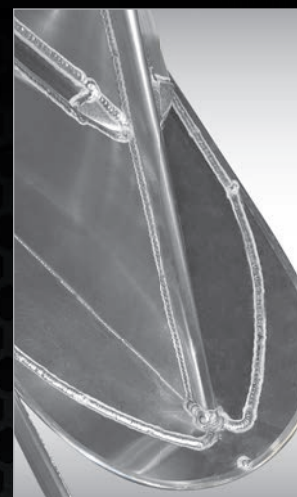
Docklights built into walls are protected from impact and are not a trip hazard! Nose cone tips covered by deck are less prone to damage and are less dangerous than exposed.



Exclusive side protector keel – protects pontoon from side impact at docks, provides a spray diversion and makes pontoon structure stronger.



One-piece nose cone has heavy-duty double-wrapped, double-thickness .200 leading edge.



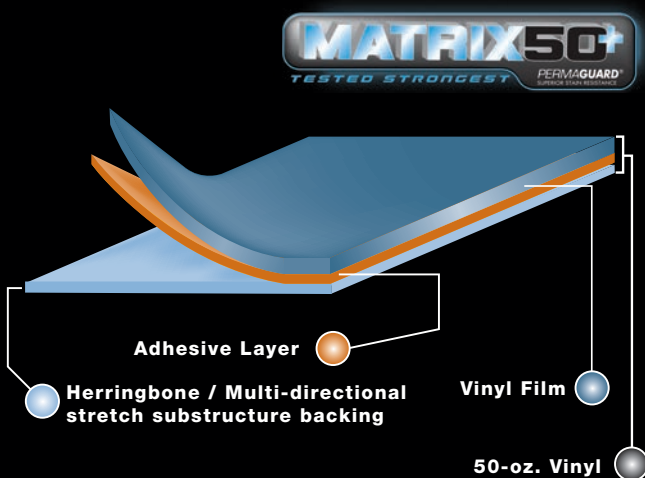
Integrated nose cone splash fins cannot be broken off! Fins have welded edge guard.



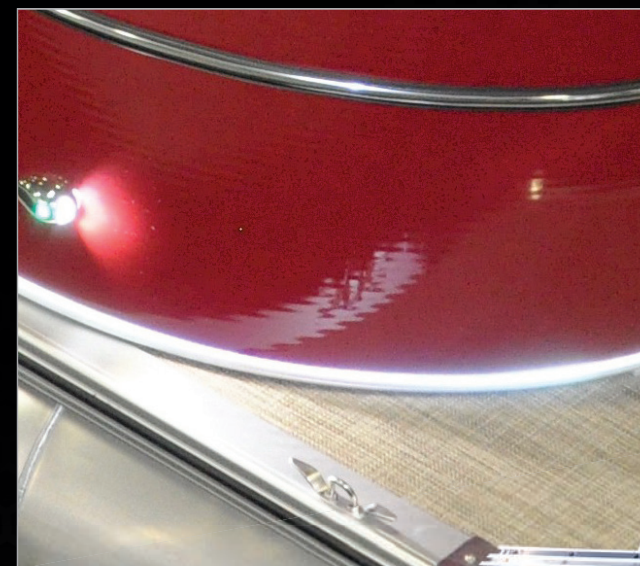
Tahoe's unique suspension seat cushions provide soft comfortable cushions that don't bottom out on a hard support surface

Tahoe's exclusive Matrix 50 heavy-duty 50 oz. marine seat covering with a 24 percent substructure is tested strongest against tears and punctures.

- New Herringbone multi-directional stretch backing promotes quicker recovery
- Greater stitch strength
- Permaguard stain protection



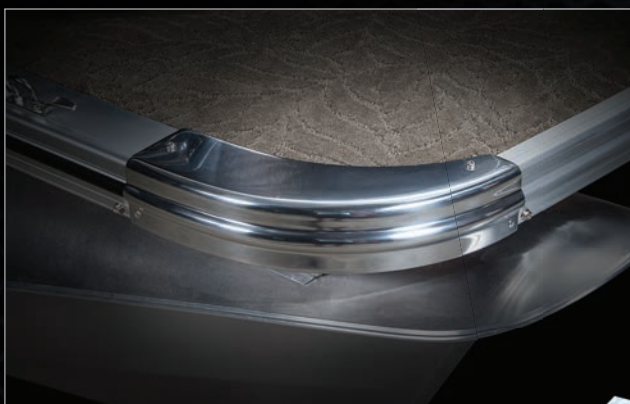
Heavy-duty rub rail with rubber bumper.



Reflective wall stripe makes boat easier to see at night.



Heavy-duty, stylishly designed, seat frame cladding eliminates fabric covering and provides a vented, beautiful accent to Tahoe's Deco designs



Heavy-duty deck corner protection.

Solid frame includes double solid full risers and double bolted motor pod all connected with double bolted hat channel crossbeams plus bow and stern .250 U bars.



VERTICALLY INTEGRATED
90% of Boat is Made In-house



THE ART OF THE PONTOON | WWW.TAHOEPONTOONS.COM



LIFETIME LIMITED*
TRANSFERABLE STRUCTURAL WARRANTY

For non-commercial use, single engine equipped boats
*(10 year limited nontransferable structural warranty for non-commercial use,
EXCLUDING TWIN ENGINE EQUIPPED BOATS)*

**LIFETIME WARRANTY INCLUDES: Pontoons, crossbeams, seat frames,
motor mounts, wood decking, and rail structure**

10 Year Limited* Transferable bow to stern warranty on
all other components on your boat

** Warranty applies to 2021 model boats. See dealer for full warranty information
including limitations and exclusions.*

GT | Cruise



2185 CR

Boats shown may show optional equipment.



GT | Quad Lounge



2385 QL (Shown with Optional 2000 Series Furniture)

Boats shown may show optional equipment.



2385 ELW



GT | Center Console Fish



2385 CCF (Shown with Optional
Main Chair & Fishing Chairs Upgrade)



Boats shown may show optional equipment.

GT | Quad Fish



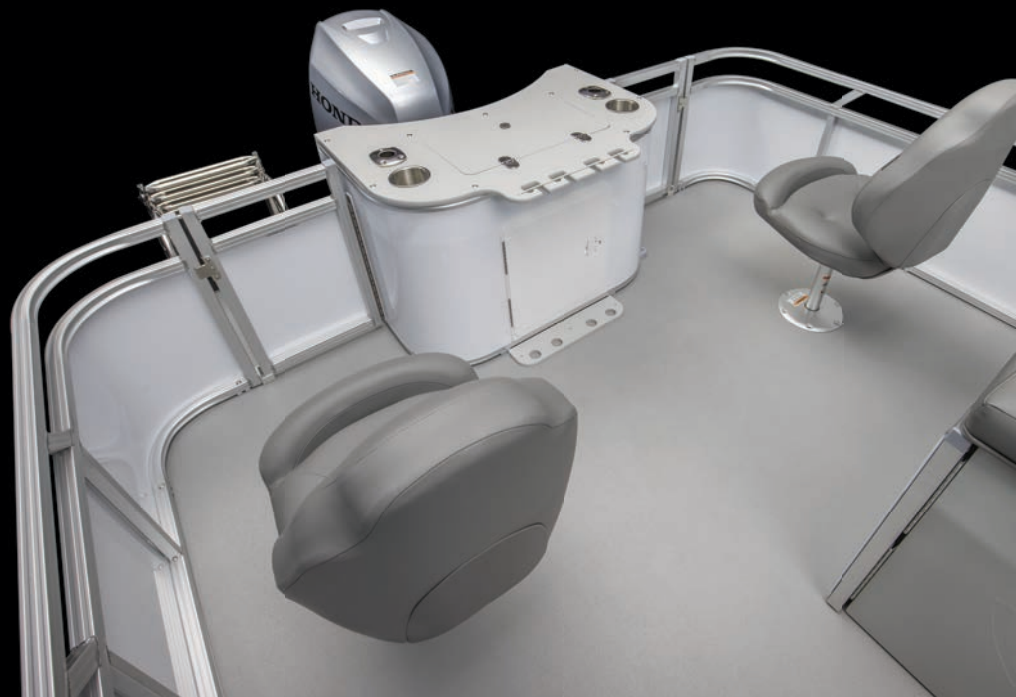
2385 QF



GT | Rear Fish



2585 RF



2585 RF

Boats shown may show optional equipment.



STANDARD FEATURES & SPECIFICATIONS

HELM

- Cadet 2 Roto Helmstand
- Dual Cadet Rotocast helmstands with Twin Windscreens & greywood dash panels (Standard on ELW only)
- Center Console Fiberglass Helmstand with Greywood Dash Panels (CCF Only)
- Tach, Volt, Fuel Gauges
- 12 Volt Power Point
- Bronze Lite Sound Package, Fusion RA-55 Radio, (2) Fusion EL Speakers, (2) Fusion EL Speaker Grills
- Steering - Mechanical Standard (no tilt) (Except CCF)
- Steering - Baystar Hydraulic Tilt (Std on CCF Only)
- Viper Steering Wheel
- Removable Windshield (except ELW)
- Courtesy Light on Helmstand

INTERIOR

- Sport Low Back Drivers Chair
- Chair Adjustment Slider, Front, Back, Rotate
- Riptide, (Shadow or Dune) Vinyl Rear Deck with Deco Carpet on Remainder
- USB Charging Ports
- Stainless Steel Cup Holders
- Lifetime Aluminum Seat Frames w/ Flow-Through Ventilation
- Matrix 50 Primary Seat Vinyl
- Seat Frame Cladding color matched to primary seat vinyl
- Suspension Seating
- Lounge Arms with Storage (based on floorplans)
- Vinyl Non-skid Strips for Entry Gates

EXTERIOR

- .040 Traditional External Lock Stripped Smooth Wall panels
- Bimini Top with 1 1/4" Square Anodized Aluminum Frame SST Quick Release Bimini Mounts & Transport Position Brackets
- USCG Navigation Lights
- Flat Graphic Logos
- Gates w/ Lift n Lay hinge
- Rear Stainless Telescoping Ladder (QF, RF, & CCF Only)
- Rear Aluminum Ladder (Except QF, RF & CCF)

FISHING

- Garmin Striker 5CV Color Fishfinder / Depth Finder (Std on CCF Only)
- Rear Fishing Center with Rod Holders & Livewell (QF, RF, & CCF)
- Rod Box (Std on CCF Only)
- Tackle Trays with Rear Sink & Access Door (Std on 25' CCF Only)

HULL

- 2 - 23" Diameter Pontoons (19' only)
- 2 - 25" Diameter Pontoons (Except 19')
- 25" Express tube with High Performance Lifting Fins & Aluminum Waveshield (Std on CCF Only)
- Deck Corner impact protection -Aluminum
- Tapered Front Deck
- Extended Rear Deck (QF, RF, & CCF Only)
- Pontoon Double Full Risers
- 3" Rub Rail with Black Rubber Insert
- 4 Stainless U bolt & Cleat Combo

FUEL

- 25 Gallon transom

2585

2385

2185

1985

CR



CR II



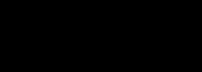
QL



ELW



CCF



QF



RF

GT	Length Class	Boat Length Overall	Deck Length	Pontoon Diameter	Width	Dry Weight	Max Weight Capacity	Max Persons Pounds	Max Number Persons	Max Engine HP
1985 23"	19	19' 5"	19' 3"	23"	8.5'	1650	1610	1050	8	75
1985 25" EP	19	19' 5"	19' 3"	25" X 3	8.5'	1880	1750	1225	9	90
1985 25" SP	19	20' 6"	19' 3"	25" X 3	8.5'	2050	2155	2255	10	115
1985 25" WG	19	20' 6"	19' 3"	25" X 3	8.5'	2050	2255	2255	10	115
2185 25"	21	21' 5"	21' 3"	25"	8.5'	1850	2035	1300	10	115
2185 25" EP	21	21' 5"	21' 3"	25" x 3	8.5'	2040	2035	1300	10	115
2185 25" SP	21	22' 6"	21' 3"	25" x 3	8.5'	2750	2240	1300	10	175
2185 25" WG	21	22' 6"	21' 3"	25" x 3	8.5'	2750	2240	1300	10	175
2385 25"	23	23' 5"	23' 3"	25"	8.5'	2150	2150	1540	11	125
2385 25" EP	23	23' 5"	23' 3"	25" x 3	8.5'	2450	2150	1540	11	115
2385 25" SP	23	24' 6"	23' 3"	25" x 3	8.5'	2800	2582	1768	12	200
2385 25" WG	23	24' 6"	23' 3"	25" x 3	8.5'	2900	2560	1600	12	250
2385 27" WG	23	24' 6"	23' 3"	27" x 3	8.5'	3050	2980	1890	13	250
2585 25"	25	25' 5"	25' 3"	25"	8.5'	2450	2430	1770	13	135
2585 25" EP	25	25' 5"	25' 3"	25" x 3	8.5'	2650	2650	1790	13	115
2585 25" SP	25	26' 6"	25' 3"	25" x 3	8.5'	3000	2877	2063	14	200
2585 25" WG	25	26' 6"	25' 3"	25" x 3	8.5'	3100	2825	2015	14	250
2585 27" WG	25	26' 6"	25' 3"	27" x 3	8.5'	3200	3270	2460	17	350

